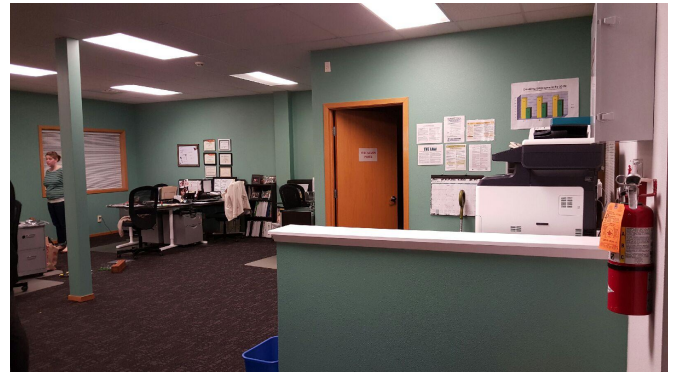

Gratitude for Rice Fergus Miller

December, 2015 | Karen Williams

In this season of gratitude, Trillium Employment Services is grateful for all the organizations and people that make Kitsap a strong community.

We started serving the community in 2011, helping businesses hire and train employees with intellectual disabilities. At that point we were 1.5 staff working out of the trunk of our cars, building relationships and serving 20 people and businesses. In just four years we opened a tiny office and outgrew it with a team of 12. We could not have made the move to our new office without the kind and creative services from Rice Fergus Miller architecture (RFM). Dave Fergus and designer Allie Leaf committed to making the project successful even with our tiny nonprofit budget. It was evident throughout the process that RFM is dedicated to the Kitsap community and invests in small and big ways to support good things.

Their community giving program donates to several organizations, like the Bremerton Food Line and Habitat for Humanity. They also host Leadership Kitsap events and other community gatherings in their office, the renovated Sears building in Bremerton. We are thankful for how they helped our nonprofit and we are elated to be a part of a community that fosters great businesses like RFM. Thanks RFM.



Above: two images taken of Trillium Employment Service's Kitsap County office.

Below: Logo of Rice Fergus Miller as found on their website: <http://www.rfmarch.com/>

